

Knowledge Mat- Could you climb Mount Everest in your school uniform?

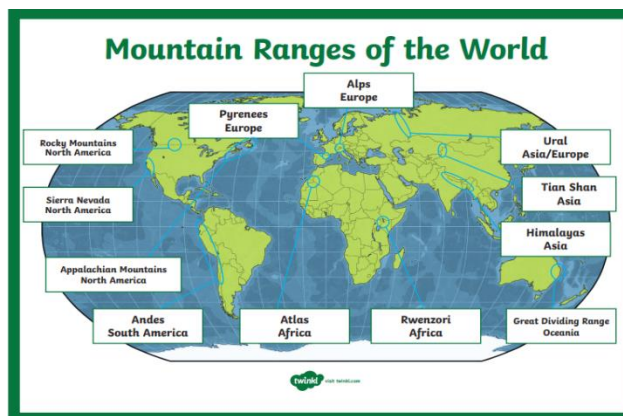


Year 3	Year 4	Year 5
<ul style="list-style-type: none"> Know the names of and locate at least eight European countries and their capital cities. Use maps and globes to locate European countries and capitals. Know and name the eight points of a compass. Know what causes an earthquake. Know the layers of the Earth. Know 3 ways that a volcano is formed 	<ul style="list-style-type: none"> I know and can identify the main mountain ranges of Europe I know the name of the highest mountain in Europe Know the name of the highest mountain in the Alps I know the countries that make up the UK and the highest mountain ranges in the UK. Locate these in an atlas. I can use the eight points of a compass Use the eight points of a compass (as in Y3) , four-figure grid references. OS maps, symbols and a key. I know how mountains are formed. I know how contour lines represent the gradient and steepness of an area. I know about the lives of Sherpas who live in Nepal 	<ul style="list-style-type: none"> Use digital mapping to locate countries and de features studied. Know how to use graphs to record features such as temperature or rainfall across the world. Use fieldwork to observe, measure, record and present the physical features in the local area (rainfall). Locate the USA and Canada on a world map and atlas. Locate and name the main countries of South America on

Subject Specific Vocabulary	
peak	Is the highest point of any mountain.
valley	A valley is a long depression, or ditch, in Earth's surface and usually lies between ranges of hills or mountains.
cliff	They are tall, steep rocks that were created by erosion and have vertical faces.
ridge	Are part of the steep, sloping side of a mountain.
plateau	A plateau is an area of flat ground that is much higher than the surrounding area.
summit	It is the highest point of a mountain.
hill	A hill is a landform that is high but not high enough to be a mountain.
terrain	Terrain is used as a general term when referring to the lie of the land.
range	A mountain range is a group or chain of mountains that are close together.
tectonic plates	The Earth's outer layer is made up of large, moving pieces called plates .
fold mountains	Fold mountains are formed when two plates run into each other or collide

Knowledge

- The highest 14 mountains in the world are all found in the Himalayas-Mount Everest is the world highest mountain and K2 the next highest.
- Mountain ranges in U.K – Cairngorms highest Ben Nevis (Scotland) Snowdonia (Wales) highest snowdon Cumbrian mountains highest Scarfel Pike (England)
- I know Mt Elbrus in Russia is the highest mountain in Europe. Mont Blanc is the highest mountain in the Alps.
- I know how mountains are formed- block, volcanic, fold and dome.
- I can use 8 point compass directions.
- I know how contour lines represent the steepness (gradient) of an area.
- I know about the Sherpas of Nepal (who help people climb Mount Everest) way of life.



How Are Mountains Made?			
Fold mountains	Fault-block mountains	Volcanic mountains	Dome mountains
Tectonic plates collide and rock is pushed up.	Cracks in the earth's surface open up, some chunks of rock are pushed up, some down.	Formed around volcanoes and made of layers of ash and cooled lava.	Formed when magma is forced upwards but doesn't ever flow out of the crust.

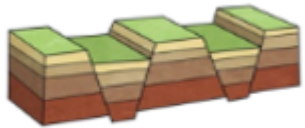
Knowledge Mat- Could you climb Mount Everest in your school uniform?



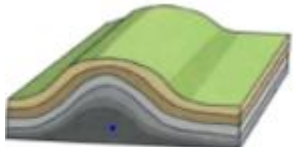
I know how mountains are formed.



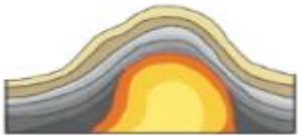
Volcanic mountain



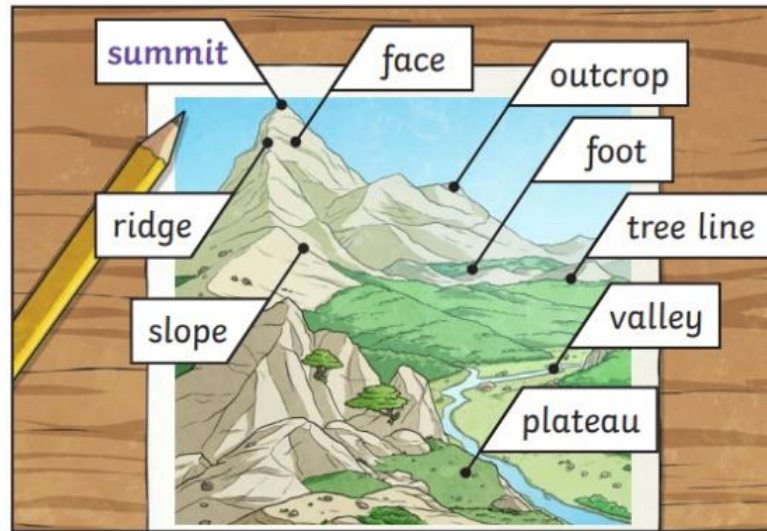
Block mountain



Fold mountain



Dome mountain



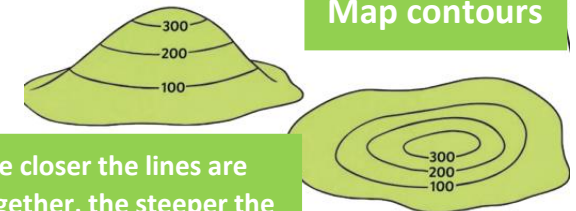
Geography Themes	
	Show respect to our immediate environment and school grounds.
	Know the countries of the UK and the surrounding seas.
	Show respect to each other and appreciate differences in the class.

Sherpa people



Some Sherpa people help others climb the high mountains in the Himalayas.

Map contours



The closer the lines are together, the steeper the slope will be.

Europe mountains

Albrus
Mont Blanc

British Mountains

Ben Nevis
Snowden
Pennines
Skafell Pike

Highest world mountains

Everest
K2